

# NOBLE

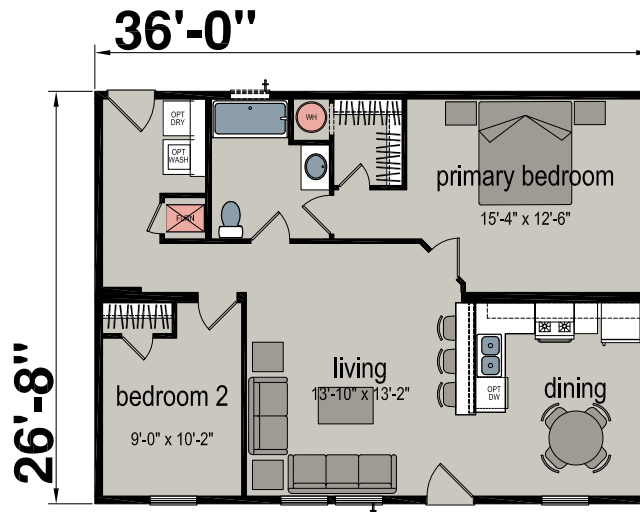
S E R I E S



**CHAMPION**<sup>®</sup>  
HOMES

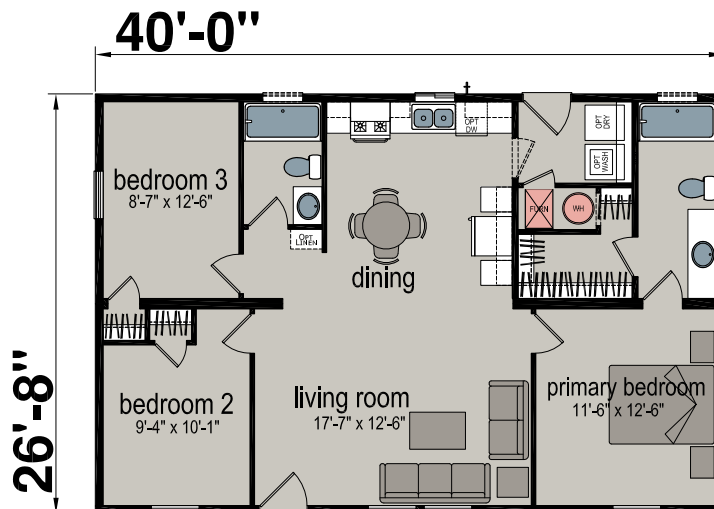
## 2836H21112

Two Bed | One Bath | 980 sq. Ft.



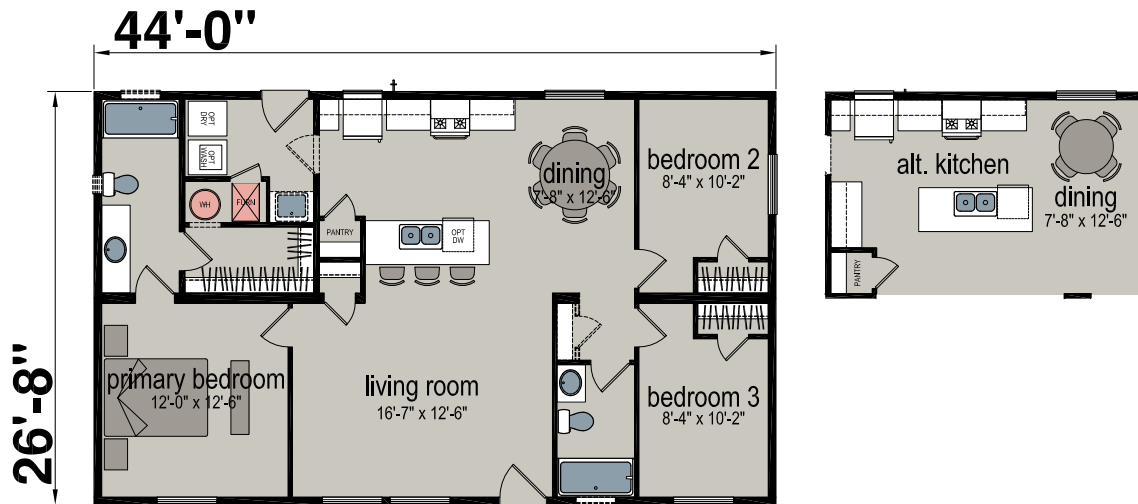
## 2840H32372

Three Bed | Two Bath | 1,067 sq. Ft.



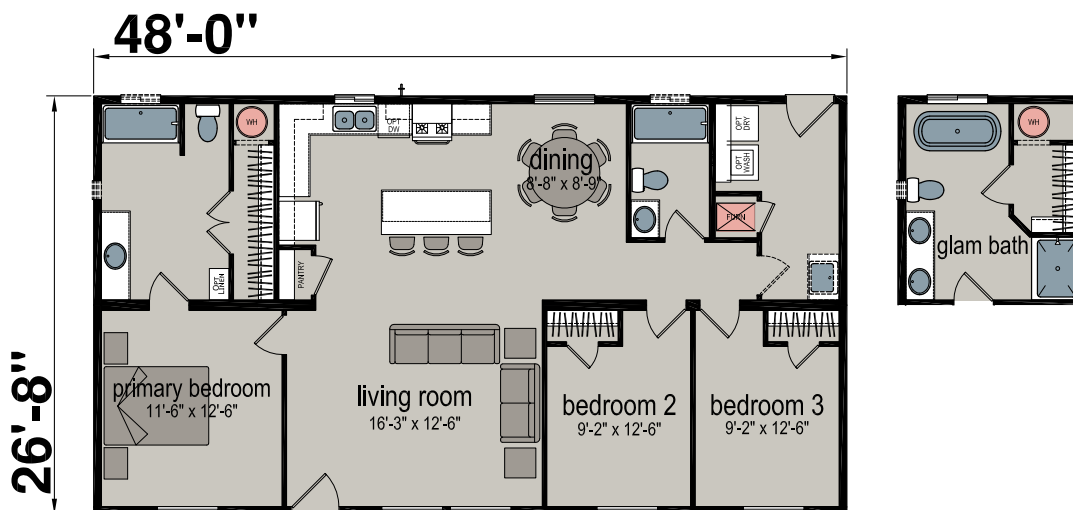
## 2844H32375

Three Bed | Two Bath | 1,173 sq. Ft.



## 2848H32377

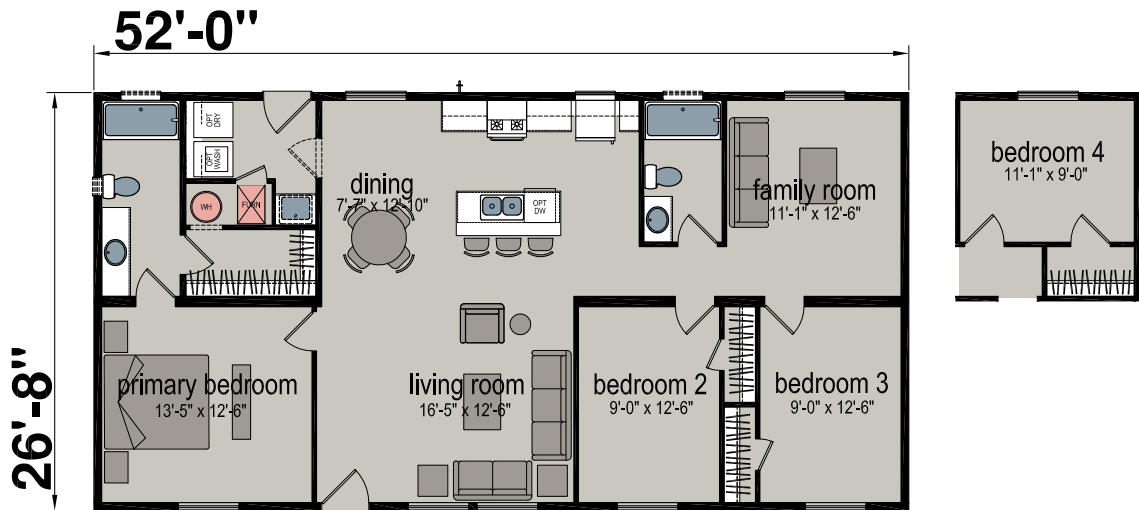
Three Bed | Two Bath | 1,280 sq. Ft.





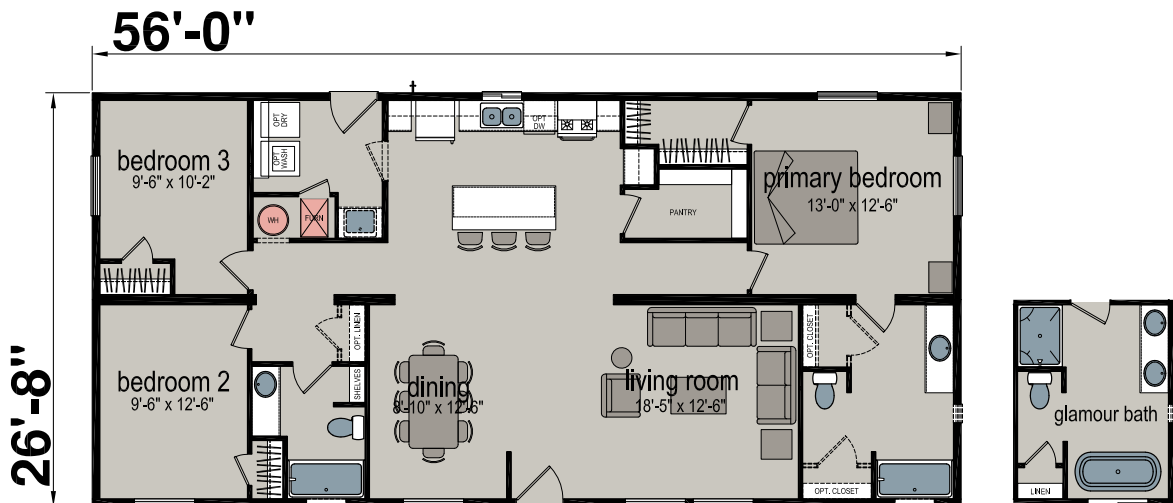
## 2852H32123

Three Bed | Two Bath | 1,387 Sq. Ft.



## 2856H32044

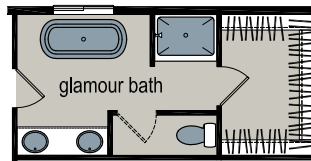
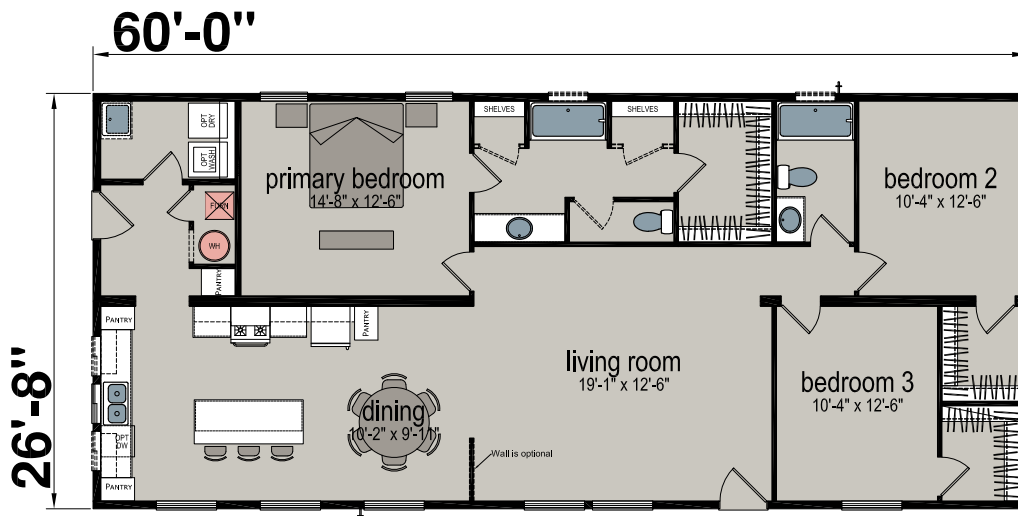
Three Bed | Two Bath | 1,493 Sq. Ft.





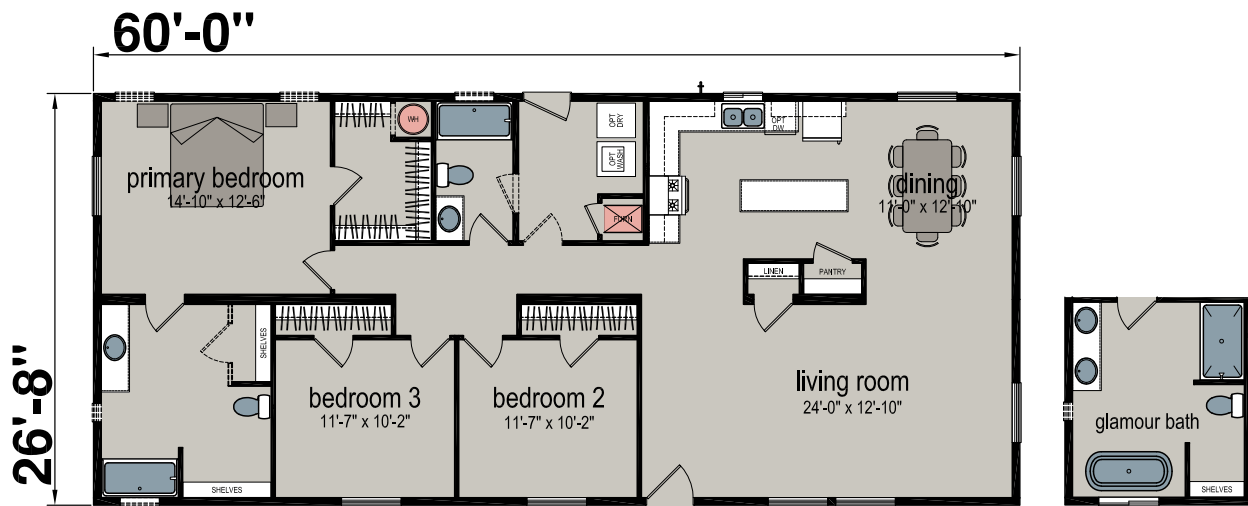
# 2860H32082

Three Bed | Two Bath | 1,600 sq. Ft.



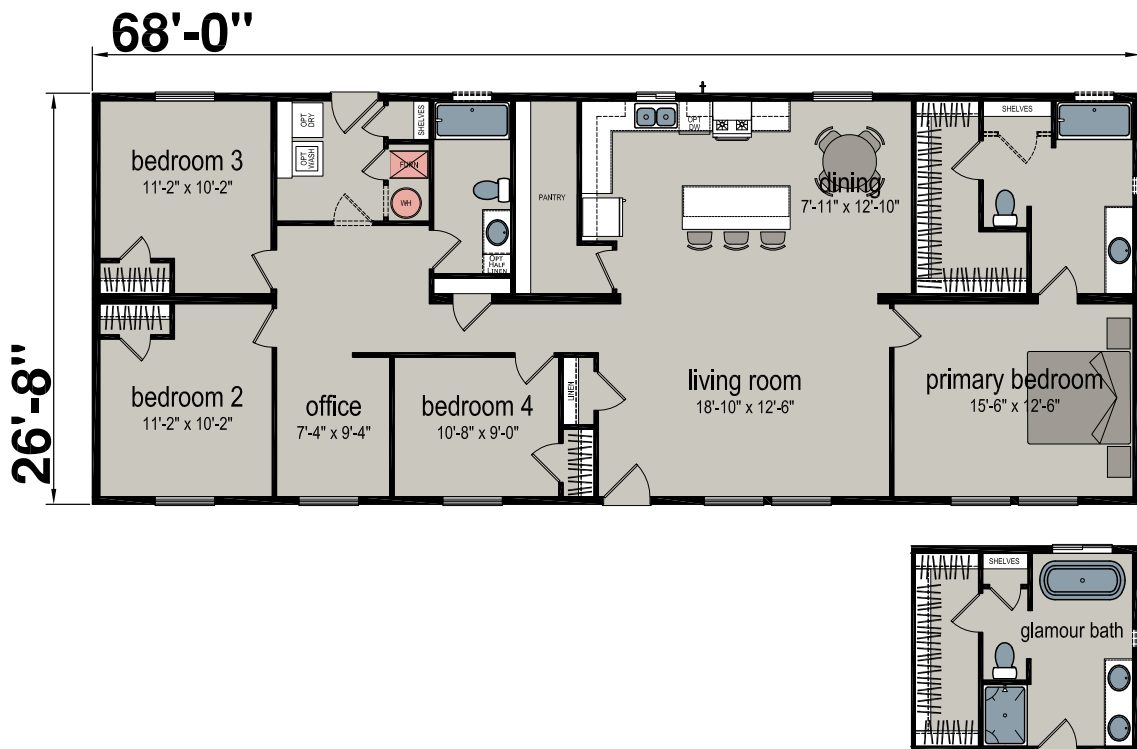
## 2860H32160

Three Bed | Two Bath | 1,600 sq. Ft.



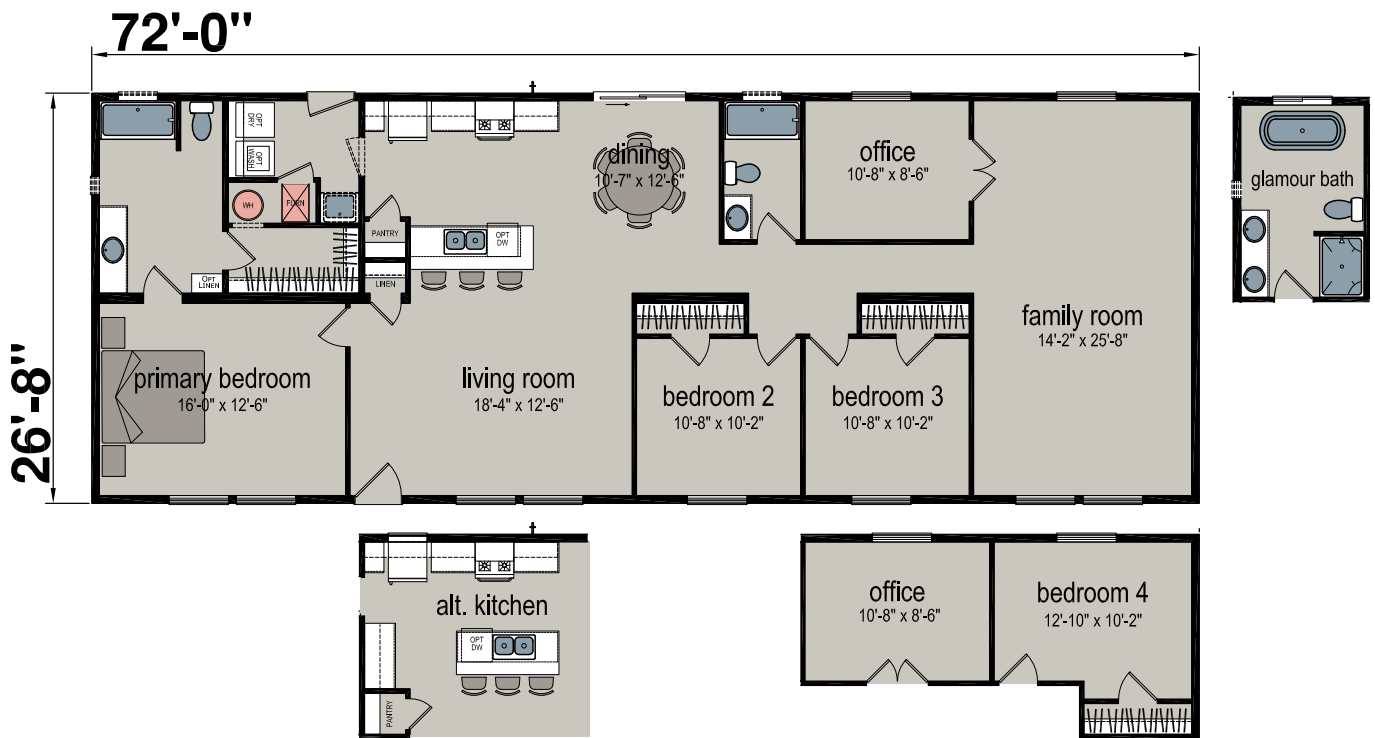
## 2868H42370

Four Bed | Two Bath | 1,813 sq. Ft.



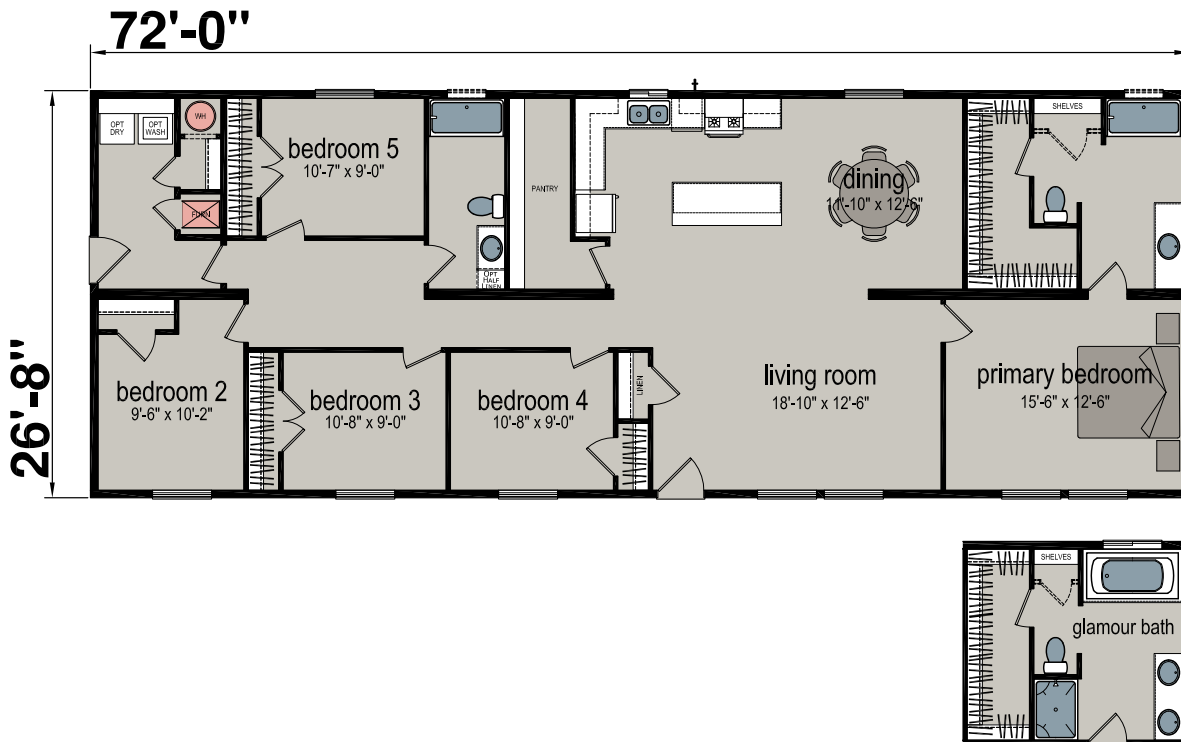
## 2872H32399

Three Bed | Two Bath | 1,920 sq. Ft.



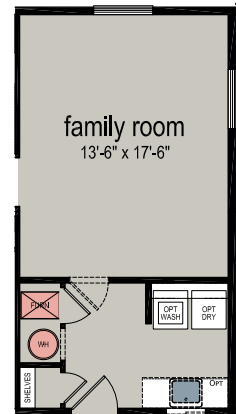
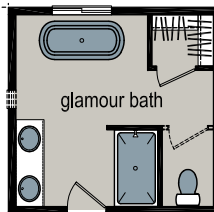
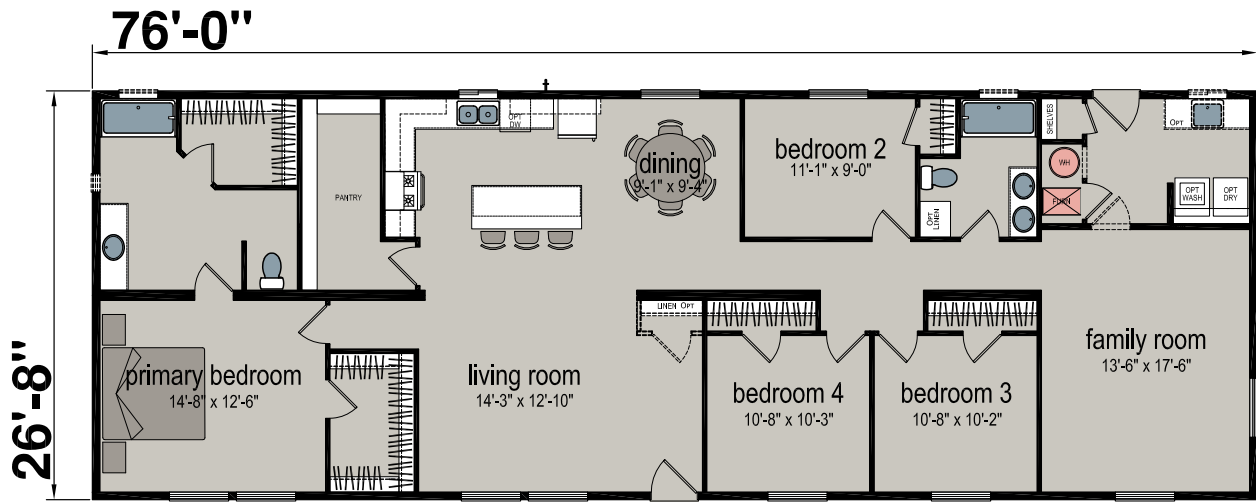
## 2872H42450

Five Bed | Two Bath | 1,920 sq. Ft.



# 2876H42184

Four Bed | Two Bath | 2,026 sq. Ft.



# Standard Features

**NOBLE**  
S E R I E S

## Construction

- “Noble” Exterior – “Half Peak” Dormer w/ Lap Accent (Most Models)
- ENERGY STAR®
- Recessed Frame
- 2X6 Floor Joists 16” O.C. 28’ (2x8 on 30’ wide)
- 19/32” Tongue & Groove OSB Decking
- 2X6 Exterior Walls 16” O.C.
- 8’6” Sidewall Height w/ Flat Ceiling
- 30# Roof Load
- Nominal 3:12 Roof Pitch
- Double 2X4 Marriage Wall Construction
- Concealed Ridge Beam
- R-40 Ceiling Insulation
- R-33 Floor Insulation
- R-21 Wall Insulation
- Front - 6” Eaves (Nominal) Rear - 6” Eaves (Nominal)
- 6” Leading & Tailing Eaves
- Detachable Hitch

## Exterior

- Frost-Free Faucet on Front Door Side
- Architectural Shingles
- Vertical Siding w/ Housewrap
- Exterior Window Trim
- Full End Wall Close-up
- 8” (Nominal) Eave Fascia
- Wood Soffit & Fascia
- 36” Fiberglass Front Door w/ 6-Lite Craftsman
- 36” Rear Door Fiberglass w/ Peep
- Vinyl Low-E Insulated Windows

## Interior

- Skip Troweled Ceiling Finish
- 1/2” Tape & Texture w/ Square Corners Throughout
- Eggshell Interior Paint Walls & Ceiling
- Shelf Over Washer / Dryer Area
- Wire Ventilated Closet Shelving
- 4046 Painted Cove Moulding
- 4” Shaker Base Moulding in Linoleum Areas
- 3.25” Shaker Door Moulding w/ 5.25” Cap
- 3.25” Shaker Window Moulding
- Wood Sill on Kitchen Window – Per Print
- Vinyl Flooring in Wet Areas
- Vinyl Flooring in Entry
- Stain Resistant Carpet

- 3/8” 5# Rebond Pad
- Floor Registers Only
- Matte Black 6” Pencil Pulls
- Tongue & Groove Accent Area in Dining Room
- 2-Panel White Interior Doors

## Electrical

- 200 AMP Panel Box
- Switch to Receptacle in Living Room
- Matte Black Bedroom Ceiling Lights
- Prep for Electric Washer/Dryer
- Toggle Light Switches
- Main Water Shut-Off Valve
- Shut-Off Valves Throughout
- (2) Black Porch Lights at Front & (1) Jelly Jar at Rear
- Standard Electric Furnace
- 30-Gallon Electric Water Heater
- Exterior GFI Receptacle
- Programmable Thermostat

## Kitchen

- 18 Cu.Ft. Refrigerator Deluxe Electric Range
- 30” StoneCrest™ Glass Rangehood
- Bank of Drawers in Kitchen
- Wilsonart® Thinscape Countertops & Edging
- Tile Backsplash to Bottom of Overheads
- Undermount Stainless Steel Kitchen Sink (Double Cell)
- Matte Black Single-Lever Faucet w/ Pulldown Sprayer
- 42” Overhead Doors w/ (2) Adjustable Shelves
- Hardwood Cabinet Doors w/ Hardwood Stiles
- Cabinet Over Refrigerator
- Full Extension (Deluxe) Metal Drawer Guides
- Crown Moulding on Overhead Cabinets
- Tile Behind Range

## Bathrooms

- 1-Piece Tub/Shower Combo
- Matte Black Towel & Tissue Holders
- 36” Lavy Height
- Elongated Toilets
- Bath Vent Fans w/ Lights
- Matte Black Framed Vanity Mirrors
- Undermount China Sinks
- Matte Black Metal Single-Lever Faucets
- Wilsonart® Thinscape Countertop & Edging
- 4” Ceramic Tile Backsplash

Due to continuous product development and improvement, prices, specifications and materials are subject to change without notice or obligation. Square footage and other dimensions are approximate. Images such as rendering, photos and floor plans may be shown with optional features and/or third-party additions that may not be available in all regions.



# CHAMPION<sup>®</sup> HOMES

1425 Sunnyside Rd | Weiser, ID 83672



Scan for More!  
**ChampionIdaho.com**