

Winchester SINGLEWIDE SERIES



Typical Elevation

Due to continuous product development and improvement, prices, specifications and materials are subject to change without notice or obligation. Square footage and other dimensions are approximate. Images such as rendering, photos and floor plans may be shown with optional features and/or third-party additions that may not be available in all regions.

Winchester SINGLEWIDE SERIES



Optional Shed Roof and Optional Porch- Garage On Site by Others

Due to continuous product development and improvement, prices, specifications and materials are subject to change without notice or obligation. Square footage and other dimensions are approximate. Images such as rendering, photos and floor plans may be shown with optional features and/or third-party additions that may not be available in all regions.

Winchester SINGLEWIDE SERIES



Optional Shed Roof- Garage On Site by Others

Due to continuous product development and improvement, prices, specifications and materials are subject to change without notice or obligation. Square footage and other dimensions are approximate. Images such as rendering, photos and floor plans may be shown with optional features and/or third-party additions that may not be available in all regions.

Winchester SINGLEWIDE SERIES

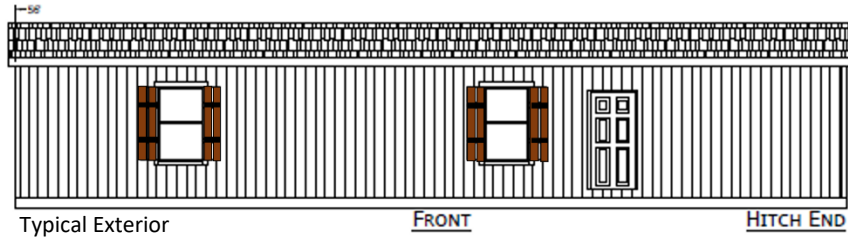


Optional Shed Roof (Garage On Site by Others)

Due to continuous product development and improvement, prices, specifications and materials are subject to change without notice or obligation. Square footage and other dimensions are approximate. Images such as rendering, photos and floor plans may be shown with optional features and/or third-party additions that may not be available in all regions.

Winchester

Singlewide Series



Construction

Exterior Shutters, Front Door Side and End
 Recessed Frame
 2 X 6 Floor Joists 16" OC (2x8 on 15' Wide)
 19/32" T&G OSB Decking
 2 X 6 Exterior Walls 16" OC
 8'6" Sidewall Height w/ Flat Ceiling
 30# Roof Load
 N4:12 Roof Pitch
 R-28 Ceiling Insulation
 R-22 Floor Insulation
 R-19 Wall Insulation
 6" Leading & Tailing Eaves
 Front-6" Eaves (Nominal)
 Rear - 6" Eaves (Nominal)
 Detachable Hitch

Bath(s)

2 pc Tub/Shower Combo in Both Baths
 Satin Nickel Towel & Tissue Holders in Both Baths
 36" Lavy Height- Master Bath / 36" in Guest Bath
 Elongated Toilet in Both Baths
 Bath Vent Fans w/ Lights in Both Baths
 24"x40" SE Bath Vanity Mirrors in Both Baths
 ABS Sinks & Dual Handle Faucets in Both Baths
 4" Can Light Above Sink in Both Baths

Exterior

Architectural Shingles
 Vertical Siding with Housewrap
 Exterior Window Trim
 Vinyl Low-E Insulated Windows
 8" (nominal) Eave Fascia
 Wood Soffit & Facia
 Front Door - 36" Fiberglass w/ Peep
 Rear Door - 36" Fiberglass w/Peep
 Hose Bib on Front Door Side

Interior

Floor Registers Only
 Skip Troweled Ceiling Finish
 1/2" T&T w/Rounded Corners T/O
 EGGHELL Interior Paint Walls & Ceiling
 Cove Moulding Throughout (0093)
 Wire Ventilated Closet Shelving
 356 Door Moulding
 356 Window Moulding
 356 Base Moulding in Lino Areas
 Vinyl Flooring in Wet Areas & Some Closets
 Stain-Resistant Carpet
 3/8" 5# Rebond Pad
 Vinyl Flooring in Living Room
 2-Panel White Interior Passage Doors
 Shelf Over Washer / Dryer Area

Kitchen

18 CF Refrigerator
 Deluxe Electric Range
 Stand-Alone Rangehood
 Bank of Drawers in Kitchen
 Laminate Countertop & Edging
 Laminate Backsplash
 Crown Moulding on Kitchen Overheads
 Stainless Steel Kitchen Sink
 Single Lever Faucet w/Sprayer
 42" Overhead Doors w/2 Adjustable Shelves
 Hardwood Cabinet Doors & Face Frame
 Shelf Over Refrigerator
 Deluxe Drawer Guides

Electrical

Switch to Receptacle in Living Room
 Satin Nickel Bedroom Ceiling Lights
 Prep for Washer/Dryer-ELEC
 Toggle Light Switches
 Main Water Shut Off Valve
 Shut-off Valves Throughout
 Porch Light- Front & Rear
 Furnace - Standard Electric
 30 Gallon Elec Water Heater
 Exterior GFI Recep
 200 Amp Panel Box

Effective: 2/23/23
 Revised: 9/16/24

Winchester

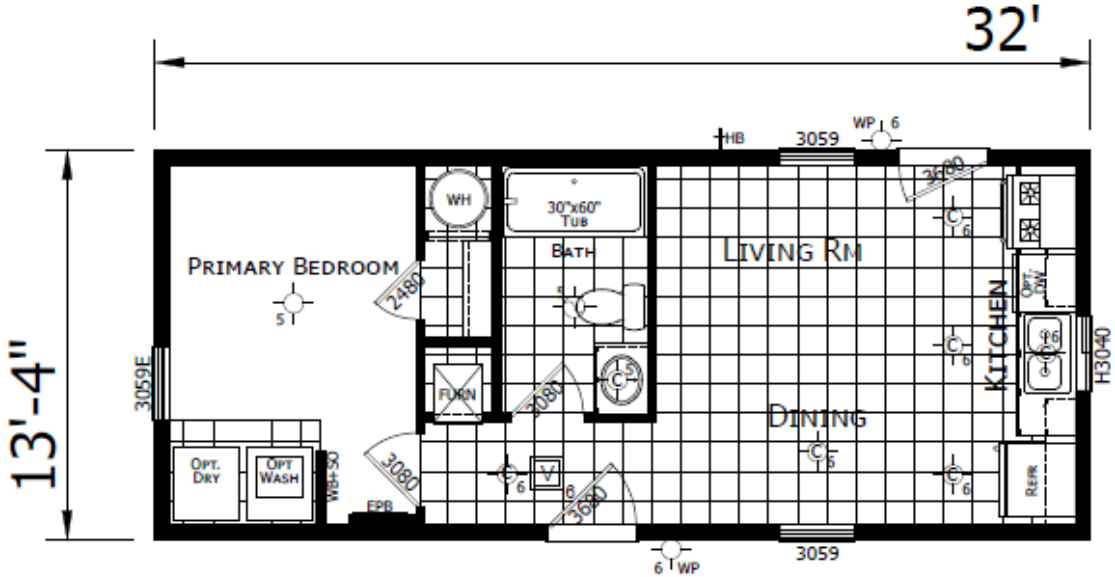


MODEL 1432H11FL1

1 BEDROOM, 1 BATH

ACTUAL SIZE: 13'4" X 32'

TOTAL AREA: 427 SQ. FT.



Due to continuous product development and improvement, prices, specifications and materials are subject to change without notice or obligation. Square footage and other dimensions are approximate. Images such as rendering, photos and floor plans may be shown with optional features and/or third-party additions that may not be available in all regions.

Winchester

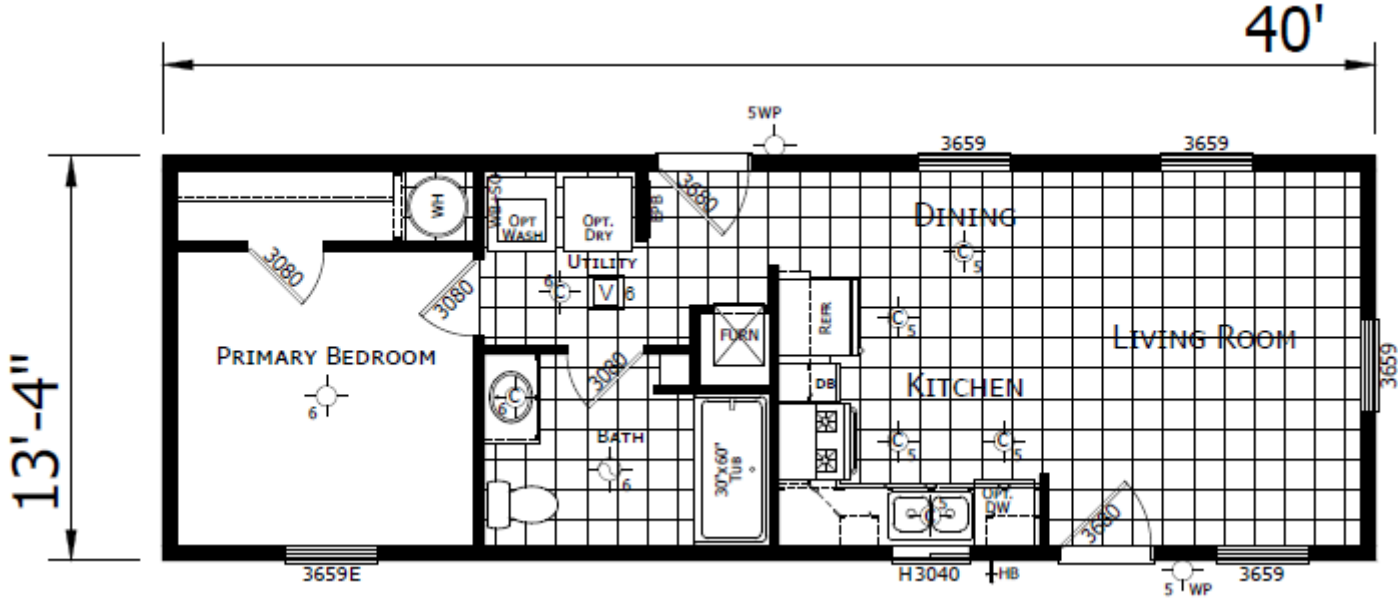


MODEL 1440H11001

1 BEDROOM, 1 BATH

ACTUAL SIZE: 13'4" X 40'

TOTAL AREA: 533 SQ. FT.



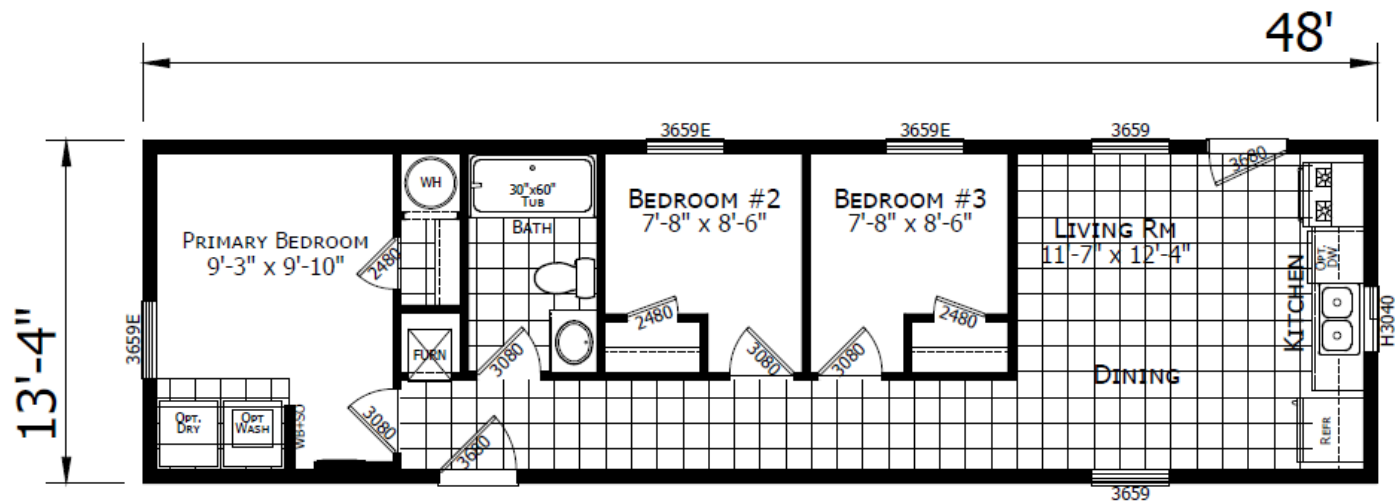
Due to continuous product development and improvement, prices, specifications and materials are subject to change without notice or obligation. Square footage and other dimensions are approximate. Images such as rendering, photos and floor plans may be shown with optional features and/or third-party additions that may not be available in all regions.

Winchester



MODEL 1448H31229

3 BEDROOM, 1 BATH
ACTUAL SIZE: 13'4" X 48'
TOTAL AREA: 640 SQ. FT.



Due to continuous product development and improvement, prices, specifications and materials are subject to change without notice or obligation. Square footage and other dimensions are approximate. Images such as rendering, photos and floor plans may be shown with optional features and/or third-party additions that may not be available in all regions.

Winchester

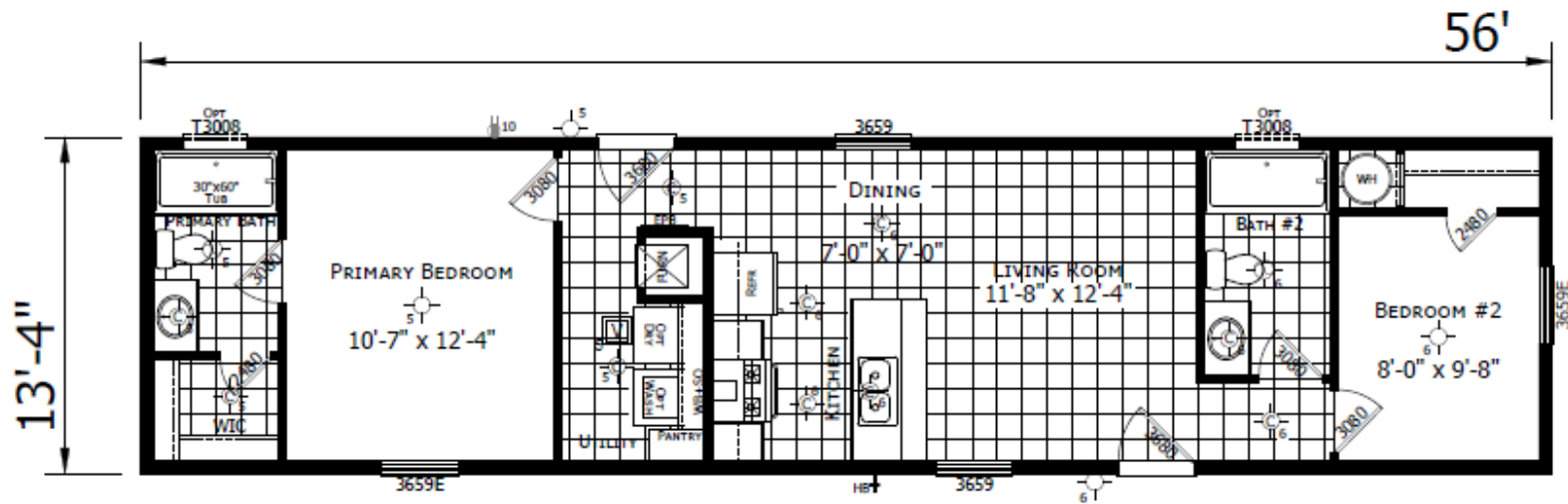


MODEL 1456H22A4A

2 BEDROOM, 2 BATH

ACTUAL SIZE: 13'4" X 56'

TOTAL AREA: 747 SQ. FT.



Due to continuous product development and improvement, prices, specifications and materials are subject to change without notice or obligation. Square footage and other dimensions are approximate. Images such as rendering, photos and floor plans may be shown with optional features and/or third-party additions that may not be available in all regions.

Winchester

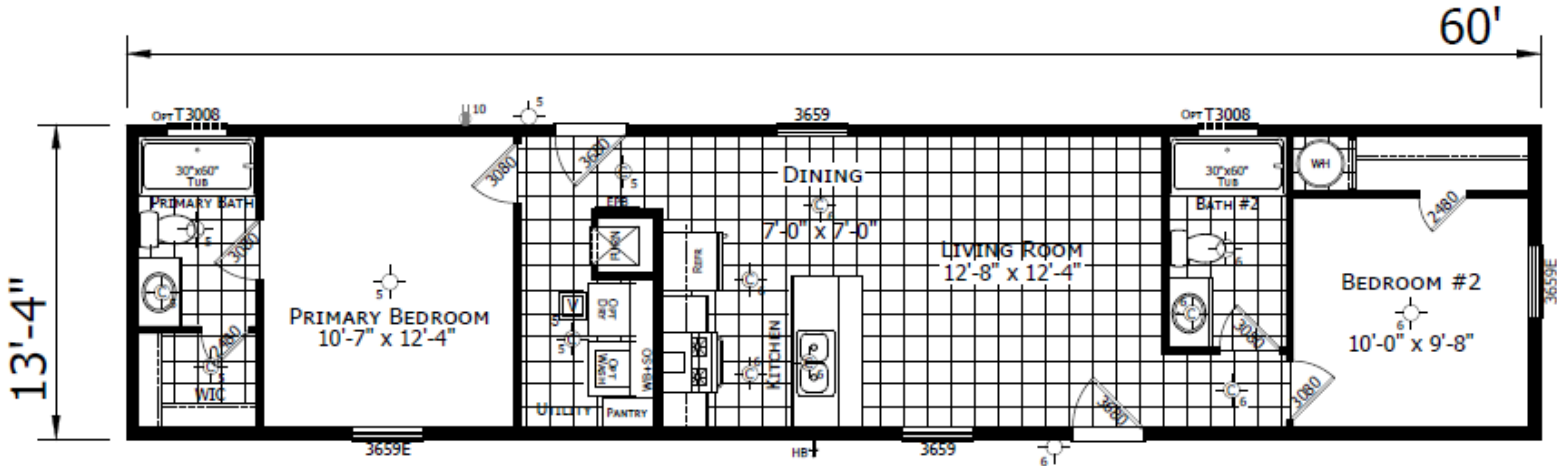


MODEL 1460H22A4A

2 BEDROOM, 2 BATH

ACTUAL SIZE: 13'4" X 60'

TOTAL AREA: 800 SQ. FT.



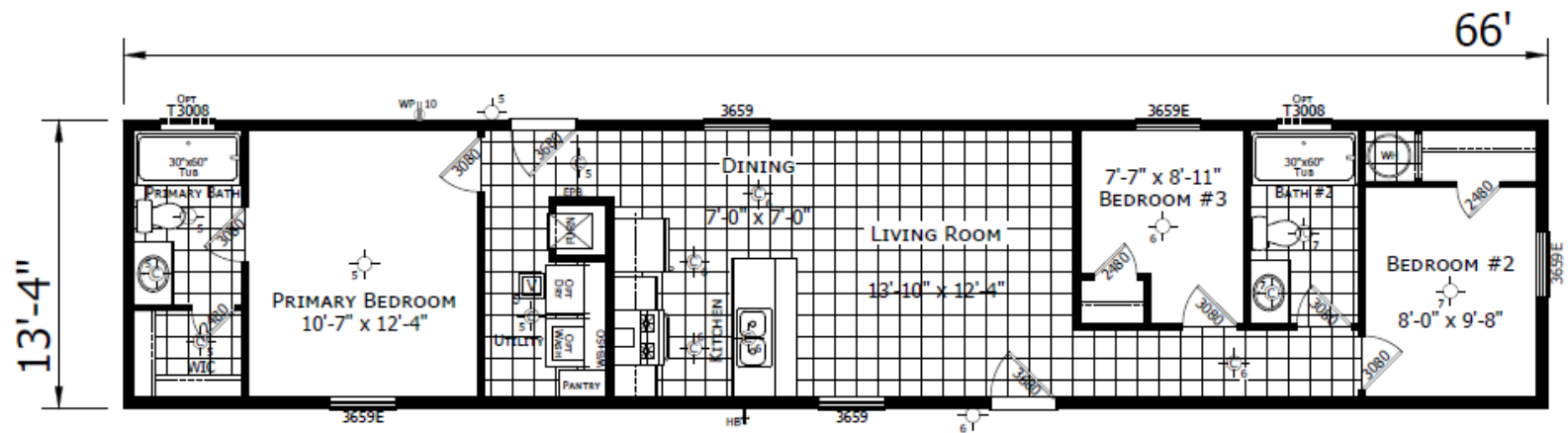
Due to continuous product development and improvement, prices, specifications and materials are subject to change without notice or obligation. Square footage and other dimensions are approximate. Images such as rendering, photos and floor plans may be shown with optional features and/or third-party additions that may not be available in all regions.

Winchester



MODEL 1466H32A4A

3 BEDROOM, 2 BATH
ACTUAL SIZE: 13'4" X 66'
TOTAL AREA: 880 SQ. FT.



Due to continuous product development and improvement, prices, specifications and materials are subject to change without notice or obligation. Square footage and other dimensions are approximate. Images such as rendering, photos and floor plans may be shown with optional features and/or third-party additions that may not be available in all regions.

Winchester

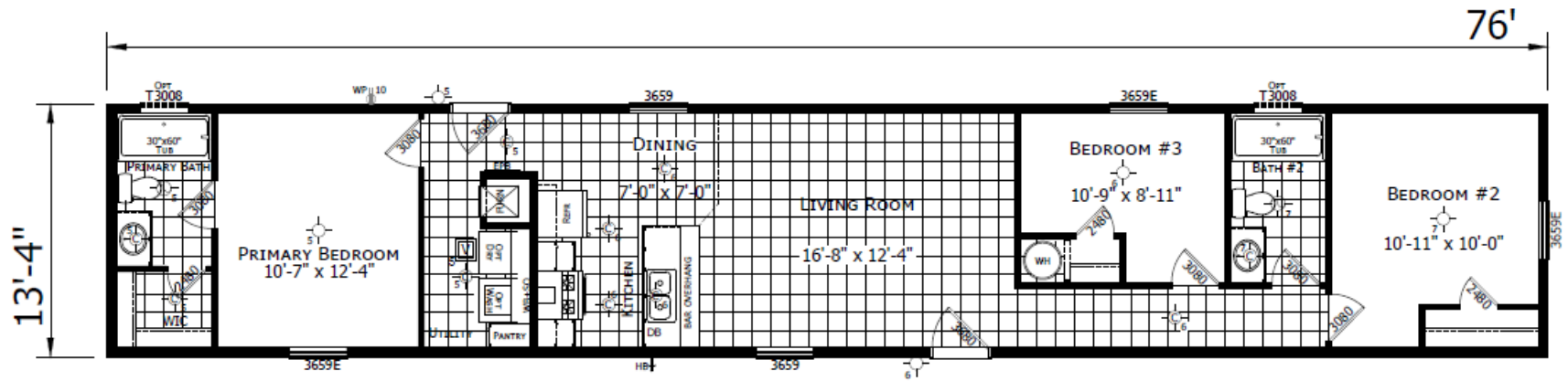


MODEL 1476H32A4A

3 BEDROOM, 2 BATH

ACTUAL SIZE: 13'4" X 76'

TOTAL AREA: 1,013 SQ. FT.



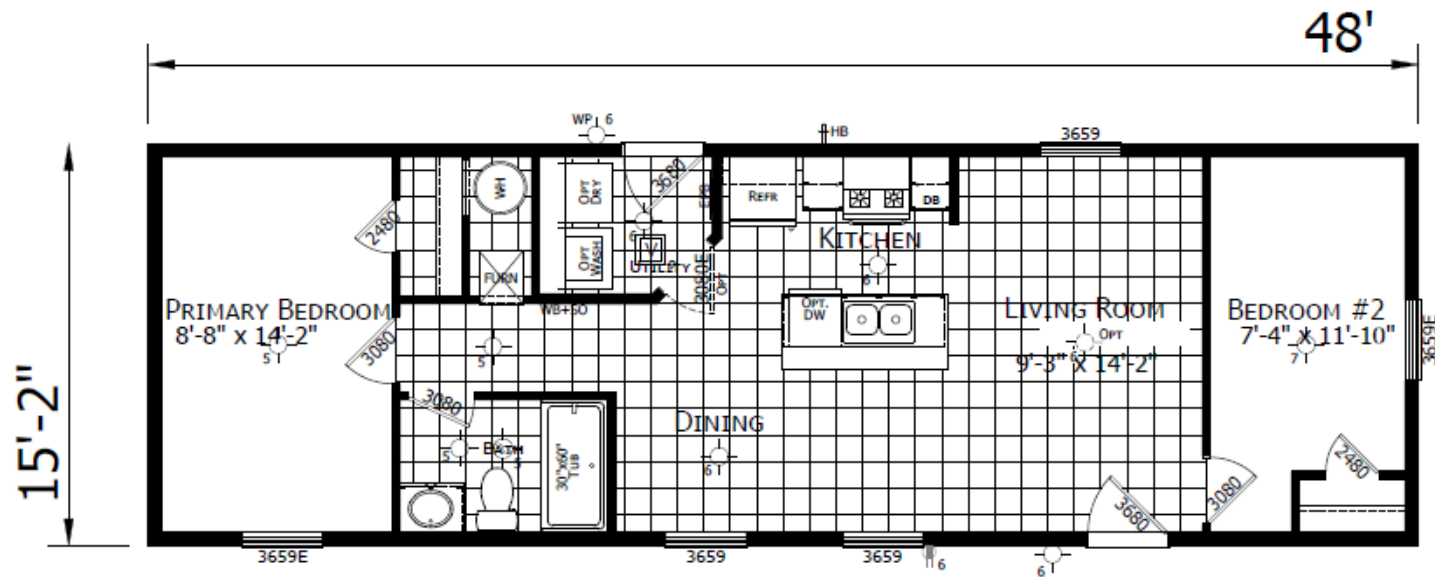
Due to continuous product development and improvement, prices, specifications and materials are subject to change without notice or obligation. Square footage and other dimensions are approximate. Images such as rendering, photos and floor plans may be shown with optional features and/or third-party additions that may not be available in all regions.

Winchester



MODEL 1648H21A6H

2 BEDROOM, 1 BATH
ACTUAL SIZE: 15'2" X 48'
TOTAL AREA: 728 SQ. FT.



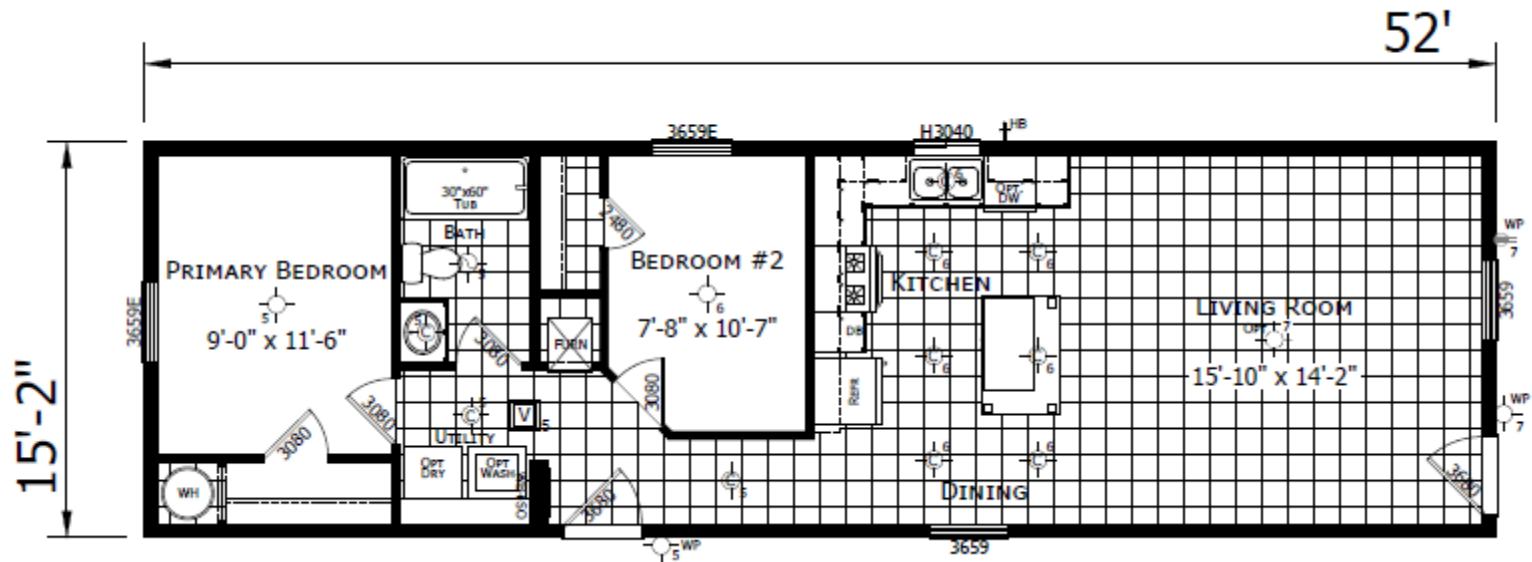
Due to continuous product development and improvement, prices, specifications and materials are subject to change without notice or obligation. Square footage and other dimensions are approximate. Images such as rendering, photos and floor plans may be shown with optional features and/or third-party additions that may not be available in all regions.

Winchester



MODEL 1652H21A6G

2 BEDROOM, 1 BATH
ACTUAL SIZE: 15'2" X 52'
TOTAL AREA: 788 SQ. FT.



Due to continuous product development and improvement, prices, specifications and materials are subject to change without notice or obligation. Square footage and other dimensions are approximate. Images such as rendering, photos and floor plans may be shown with optional features and/or third-party additions that may not be available in all regions.

Winchester



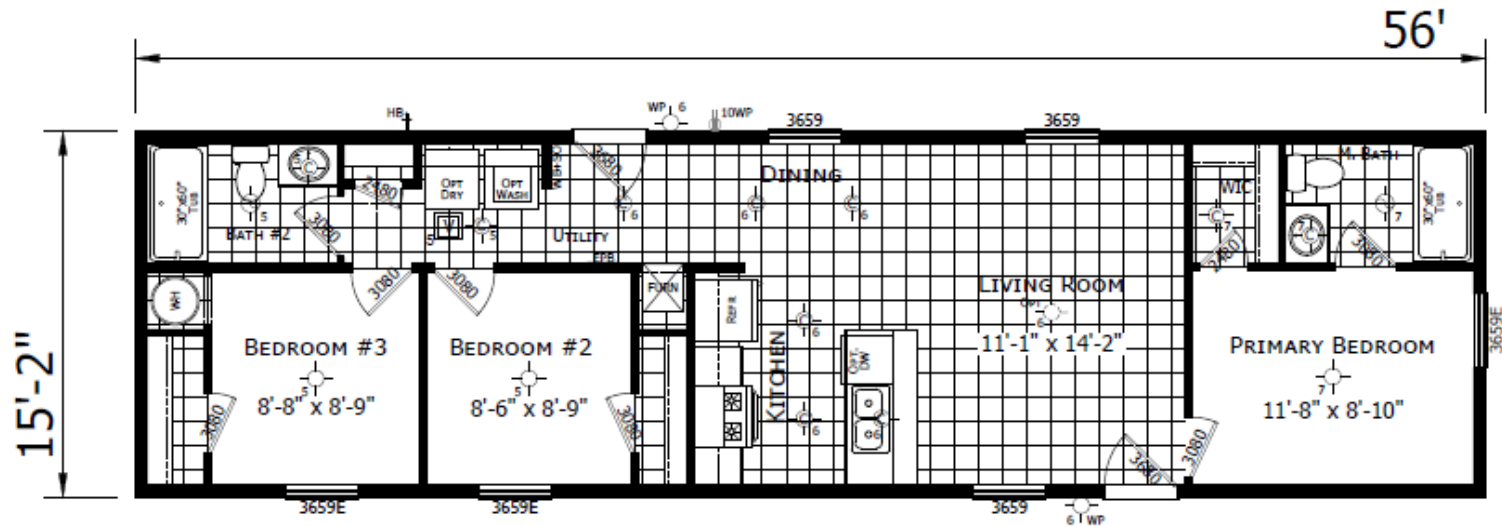
MODEL 1656H32192

3 BEDROOM, 2 BATH

ACTUAL SIZE: 15'2" X 56'

TOTAL AREA: 849 SQ. FT.

AKA Model 1656H32001



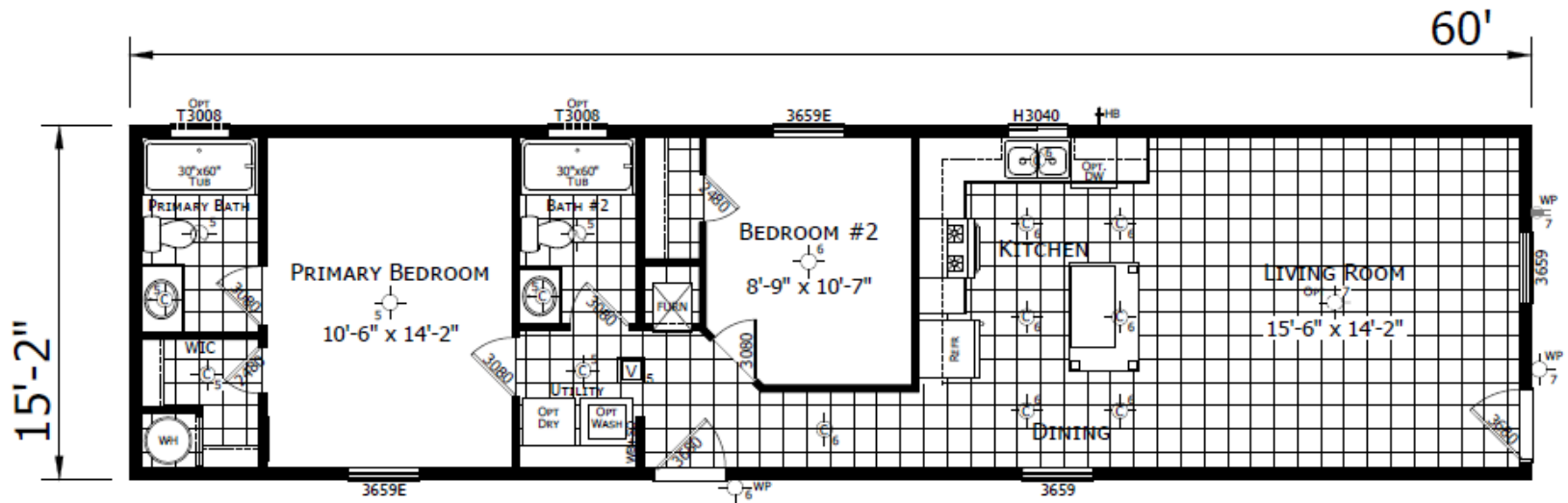
Due to continuous product development and improvement, prices, specifications and materials are subject to change without notice or obligation. Square footage and other dimensions are approximate. Images such as rendering, photos and floor plans may be shown with optional features and/or third-party additions that may not be available in all regions.

Winchester



MODEL 1660H22A6G

2 BEDROOM, 2 BATH
ACTUAL SIZE: 15'2" X 60'
TOTAL AREA: 910 SQ. FT.



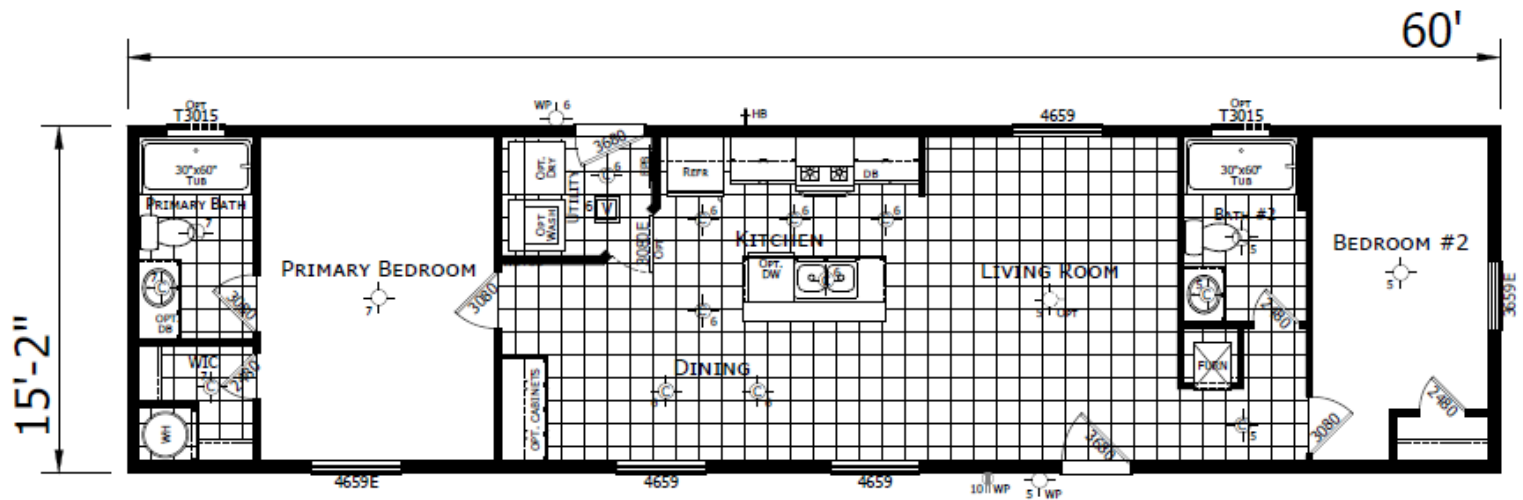
Due to continuous product development and improvement, prices, specifications and materials are subject to change without notice or obligation. Square footage and other dimensions are approximate. Images such as rendering, photos and floor plans may be shown with optional features and/or third-party additions that may not be available in all regions.

Winchester



MODEL 1660H22A6H

2 BEDROOM, 2 BATH
ACTUAL SIZE: 15'2" X 60'
TOTAL AREA: 910 SQ. FT.



Due to continuous product development and improvement, prices, specifications and materials are subject to change without notice or obligation. Square footage and other dimensions are approximate. Images such as rendering, photos and floor plans may be shown with optional features and/or third-party additions that may not be available in all regions.

Winchester

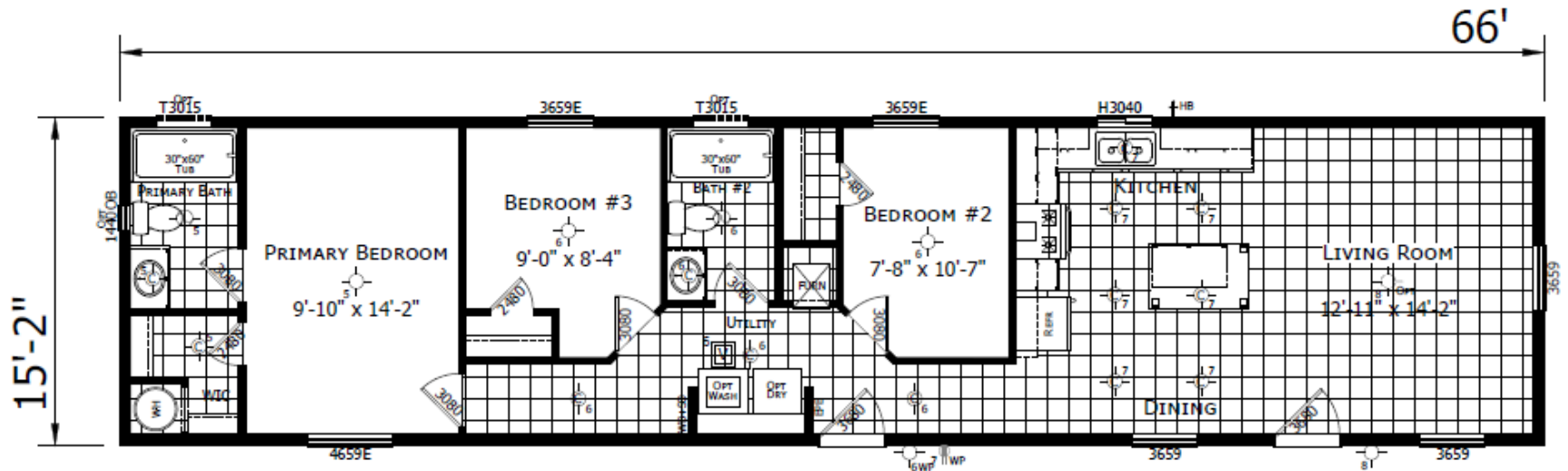


MODEL 1666H32A6G

3 BEDROOM, 2 BATH

ACTUAL SIZE: 15'2" X 66'

TOTAL AREA: 1,001 SQ. FT.



Due to continuous product development and improvement, prices, specifications and materials are subject to change without notice or obligation. Square footage and other dimensions are approximate. Images such as rendering, photos and floor plans may be shown with optional features and/or third-party additions that may not be available in all regions.

Winchester

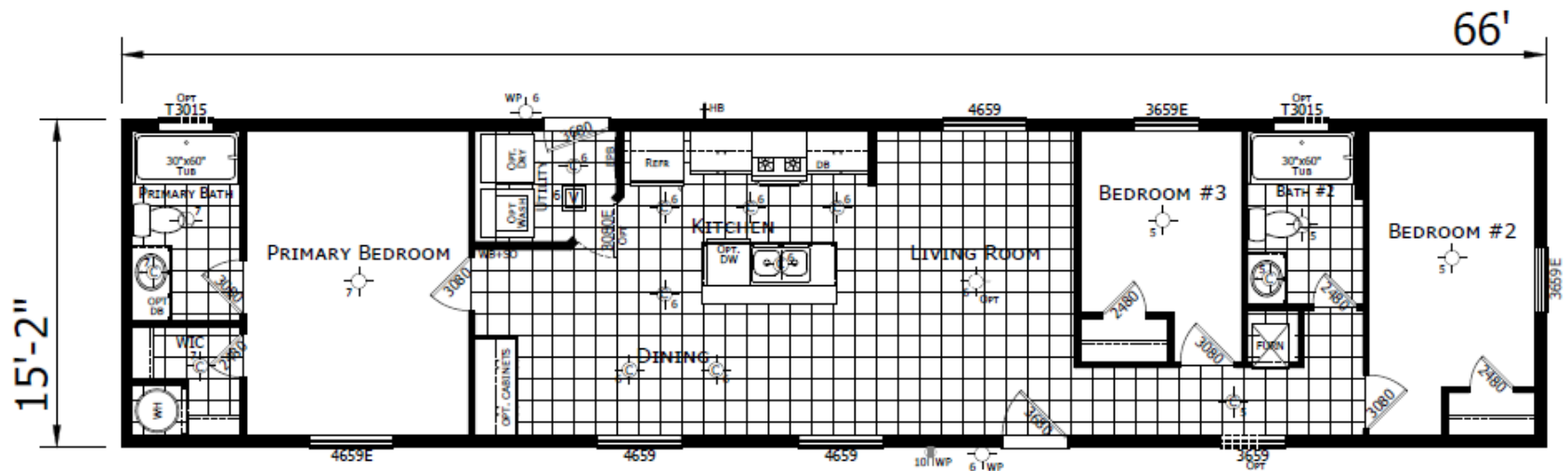


MODEL 1666H32A6H

3 BEDROOM, 2 BATH

ACTUAL SIZE: 15'2" X 66'

TOTAL AREA: 1,001 SQ. FT.



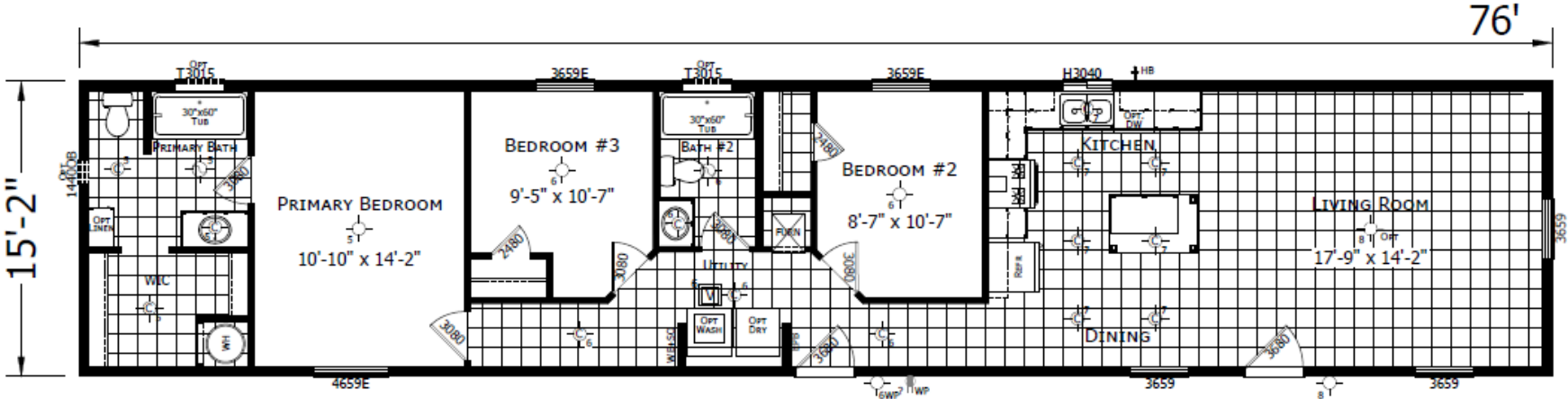
Due to continuous product development and improvement, prices, specifications and materials are subject to change without notice or obligation. Square footage and other dimensions are approximate. Images such as rendering, photos and floor plans may be shown with optional features and/or third-party additions that may not be available in all regions.

Winchester



MODEL 1676H32A6G

3 BEDROOM, 2 BATH
ACTUAL SIZE: 15'2" X 76'
TOTAL AREA: 1,153 SQ. FT.



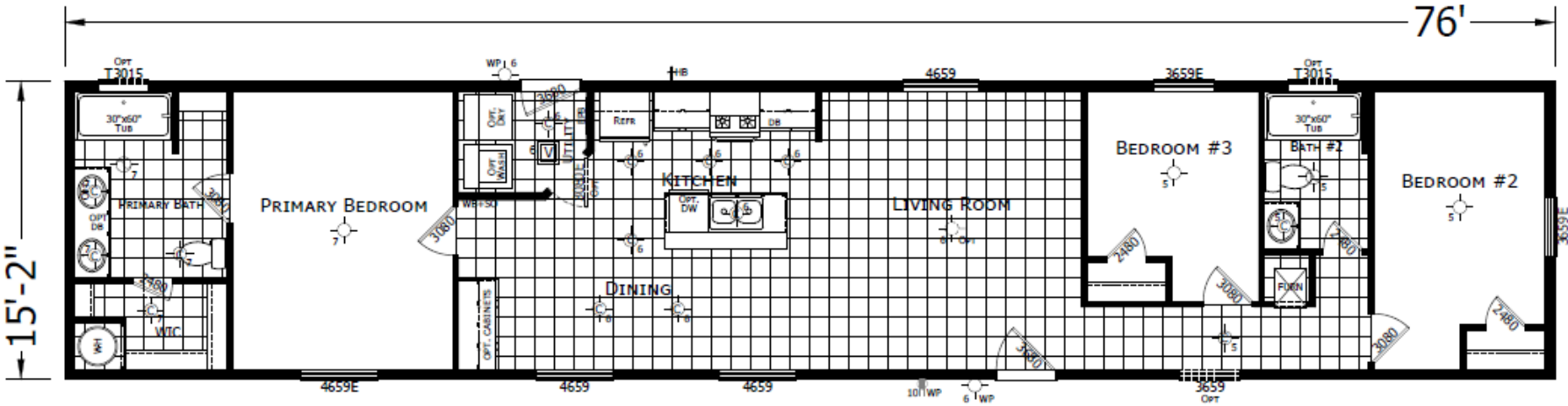
Due to continuous product development and improvement, prices, specifications and materials are subject to change without notice or obligation. Square footage and other dimensions are approximate. Images such as rendering, photos and floor plans may be shown with optional features and/or third-party additions that may not be available in all regions.

Winchester



MODEL 1676H32A6H

3 BEDROOM, 2 BATH
ACTUAL SIZE: 15'2" X 76'
TOTAL AREA: 1,152 SQ. FT.



Due to continuous product development and improvement, prices, specifications and materials are subject to change without notice or obligation. Square footage and other dimensions are approximate. Images such as rendering, photos and floor plans may be shown with optional features and/or third-party additions that may not be available in all regions.