

CHAMPION®  
HOME BUILDERS



TRANSITIONS SERIES  
HIDDEN VALLEY  
ESTATES

# HIDDEN VALLEY ESTATES

Within Transitions, a Family of Plans, you can customize your home by selecting from a variety of sizes and options. The floor plans stretch in length and width to accommodate multiple layouts, extra bedrooms, and optional master bath arrangements. Multiple exteriors and optional porch designs give the outside of your home the right style for you. Go ahead and add your unique touches to make a Hidden Valley Estates house your home.



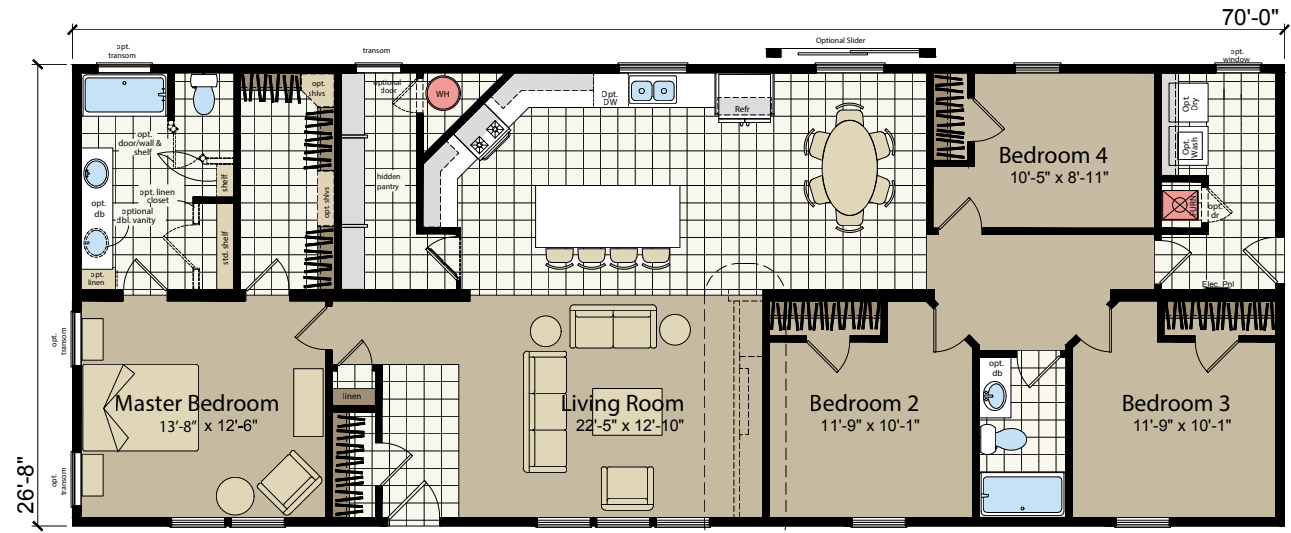
DESIGNING YOUR TRANSITIONS SERIES HOME IS AS EASY AS...

- 1 | PICK YOUR SIZE & LAYOUT
- 2 | PICK YOUR EXTERIOR
- 3 | PICK YOUR OPTIONS



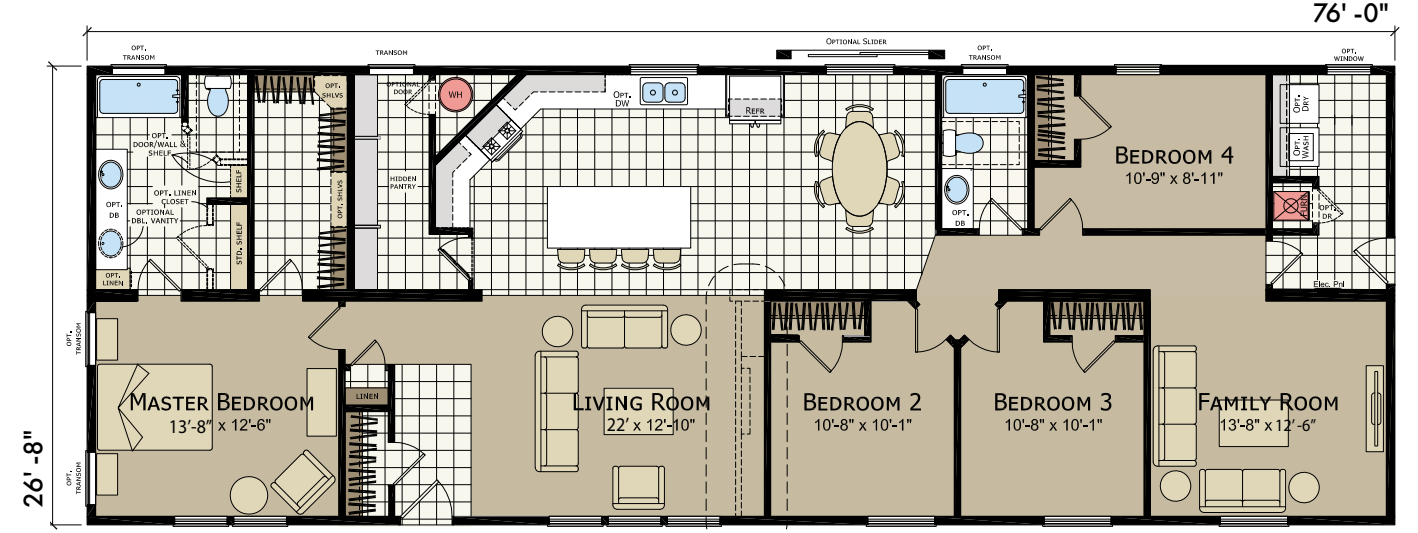


**70'** | **4 BED-2 BATH**  
**HV4704M** | **1867** SQ. FT.



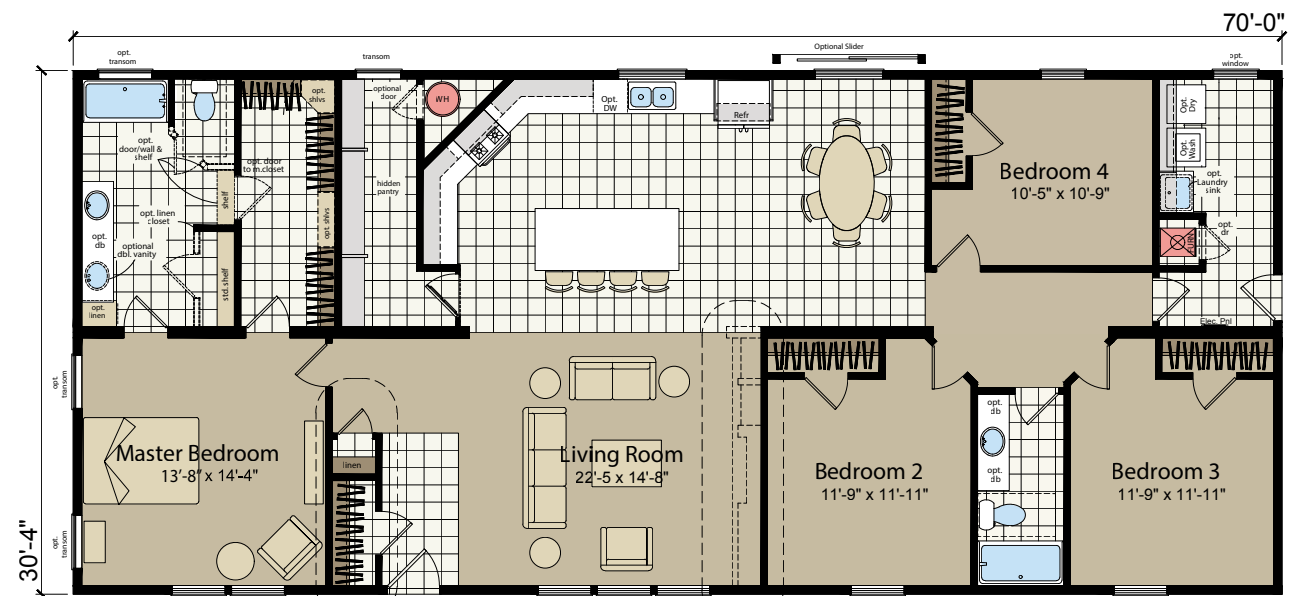
Optional Entertainment Center

**76'** | **4 BED-2 BATH**  
**HV4764M** | **2027** SQ. FT.



Optional Entertainment Center

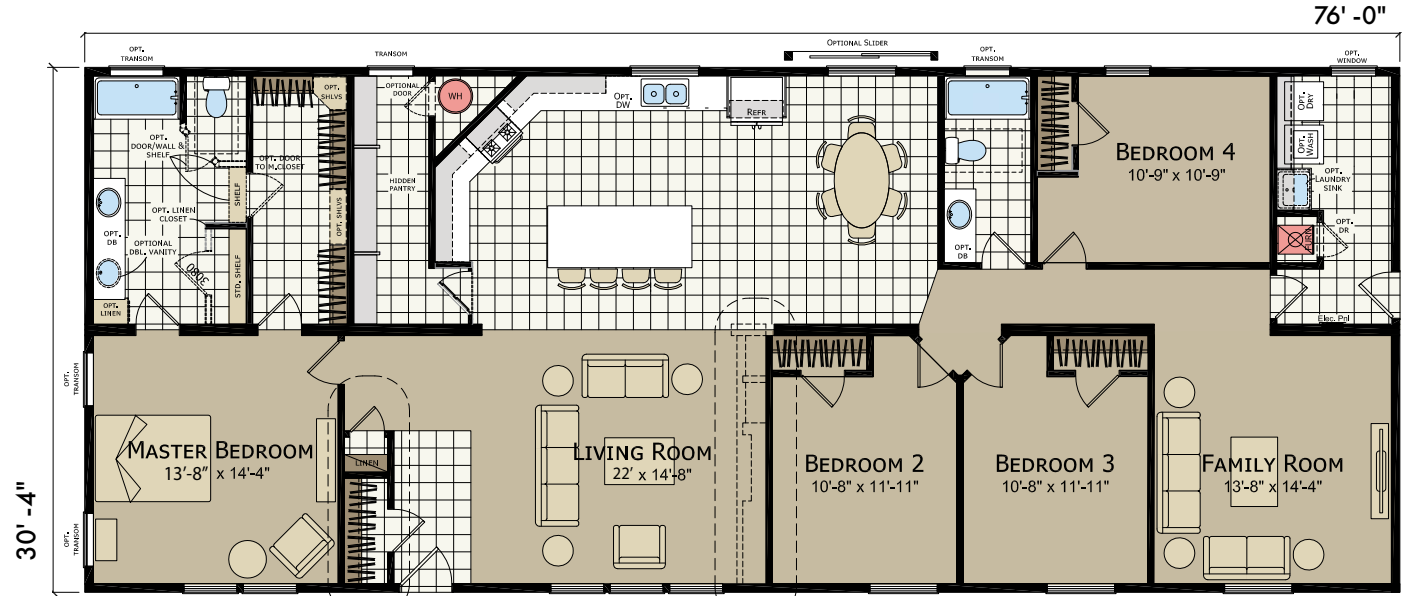
**70'** | **4 BED- 2 BATH**  
**HV6704M** | **2124** SQ. FT.



Optional Floating Vanity

Optional Entertainment Center

**76'** | **4 BED-2 BATH**  
**HV6764M** | **2306** SQ. FT.



Optional Floating Vanity

Optional Entertainment Center

# 2 | PICK YOUR EXTERIOR



# 3 | PICK YOUR OPTIONS



Please contact your dealer for additional plug and play options.

\*Exterior C and D are the same with the exception that exterior D is for models with 9' sidewalls and stacked windows

Due to continuous product development and improvement, prices, specifications, and materials are subject to change without notice or obligation. Square footage and other dimensions are approximate. Exterior images may be artist renderings and are not intended to be an accurate representation of the home. Renderings, photos and floor plans may be shown with optional features or third-party additions.



## TRANSITIONS PLUS

### HUD STANDARD FEATURES

#### CONSTRUCTION

- Detachable Hitch
- Recessed Frame
- 2x6 Floor Joists 16" o.c. (2x8" on 30' Wides)
- 19/32" T&G OSB Decking
- 2x6 Exterior Walls, 16" o.c.
- 2x4 Interior Walls, 24" o.c.
- 8'6" Sidewall Height w/ Flat Ceiling
- 30# Roof Load
- Nominal 3:12 Roof Pitch
- Double 2x4 Marriage Wall Construction
- R-28 Ceiling Insulation
- R-22 Floor Insulation
- R-19 Wall Insulation
- Dormer Over Front Door
- Front - 12" Eaves (Nominal)
- Rear - 12" Eaves (Nominal)
- In Line Heat Duct Crossover

#### EXTERIOR

- Architectural Shingles
- Vertical Siding
- 4" Exterior Window Trim
- 6" Bottom Trim (Ship Loose) Non-Lap Sided Areas
- 8" (Nominal) Eave Fascia
- Wood Soffit & Fascia
- Front Door – 36" Mission Door w/ Deadbolt
- Rear Door – 36" 9-Lite Door w/ Deadbolt
- Vinyl Low-E Insulated Windows (Non-Grid)
- Full End Wall Close-up
- Black Porch Light - Front & Rear

#### INTERIOR

- Toe Kick Floor Registers Installed
- Main Water Shut-Off Valve
- Water Shut-Off Valves Throughout
- Skip Troweled Ceiling Finish
- Full Tape & Texture Walls w/ Rounded Corners
- 1/2" Window Jamb & Wood Sill
- Eggshell Interior Paint (Walls & Ceiling)
- 16" Wood Closet Shelving
- 2-Panel White Interior Passage Doors
- 356 Door Molding
- 356 Window Molding
- 356 Base Molding Throughout
- Vinyl Flooring in Wet Areas
- Vinyl Flooring in Entryway
- 25 oz. Carpet w/ Stain Resistance (FHA Approved)
- 3/8" 5# Rebond Pad
- 2" Faux Wood Mini-Blinds Throughout (Most Windows)
- Return Air Grills in Bedrooms
- 4" LED Can Lights at Entry (Per Print)
- Cove Moulding Throughout

#### ELECTRICAL

- 4" LED Can Lights in Kitchen (Per Print)
- 4" LED Can Lights (Except Bedrooms)
- Satin Nickel Ceiling Lights in Bedrooms
- 200 AMP Panel Box
- Prep for Washer / Dryer - Electric
- Cabinet over Washer / Dryer
- Toggle Light Switches
- Furnace - Electric
- 50-Gallon Electric Water Heater
- Exterior GFI Receptacle
- Switch to Receptacle in Living Room
- Prep for Paddle Fan in Living Room

#### KITCHEN

- 18 CF Refrigerator
- Deluxe Electric Range
- 30" StoneCrest® Hood w/ Fan & Light
- Drawer over Door in Kitchen
- Double Adjustable Overhead Cabinet Shelf
- Laminate Countertop Kitchen & Baths
- Crescent Laminate Edging Kitchen & Baths
- Tile (1 Row) Kitchen & Baths
- Double Bowl Stainless Steel Sink
- Single-Lever Faucet w/ Sprayer
- Hardwood Flat Panel Cabinet System
- Cabinet over Refrigerator
- Crown Molding over Kitchen Cabinets
- Full Extension (Deluxe) Drawer Guides
- 4" LED Can Lights in Dining Room
- 42" Overhead Kitchen Cabinets

#### BATHROOMS

- 1-Piece 60" Fiberglass Tub/Shower in Each Bath
- Satin Nickel Towel & Tissue Holders
- 36" Lavy Height in Each Bath
- Elongated Toilets in Each Bath
- Bath Vent Fans w/ Lights in Each Bath
- Vanity Mirror w/ Wrapped Stile Frames
- Single-Lever Faucets in Each Bath
- China Sink in Each Bath
- 4" LED Can Light Above Bath Sink
- Satin Nickel Cosmetic 2-Bar Light in Each Bath
- Bank of Drawers in Master Bath

Due to continuous product development and improvement, prices, specifications, and materials are subject to change without notice or obligation. Square footage and other dimensions are approximate. Exterior images may be artist renderings and are not intended to be an accurate representation of the home. Renderings, photos and floor plans may be shown with optional features or third-party additions.



Scan for virtual tour

CHAMPION®  
HOME BUILDERS

1425 Sunnyside Rd  
Weiser, ID 83672

[www.CHAMPIONIDAHO.com](http://www.CHAMPIONIDAHO.com)